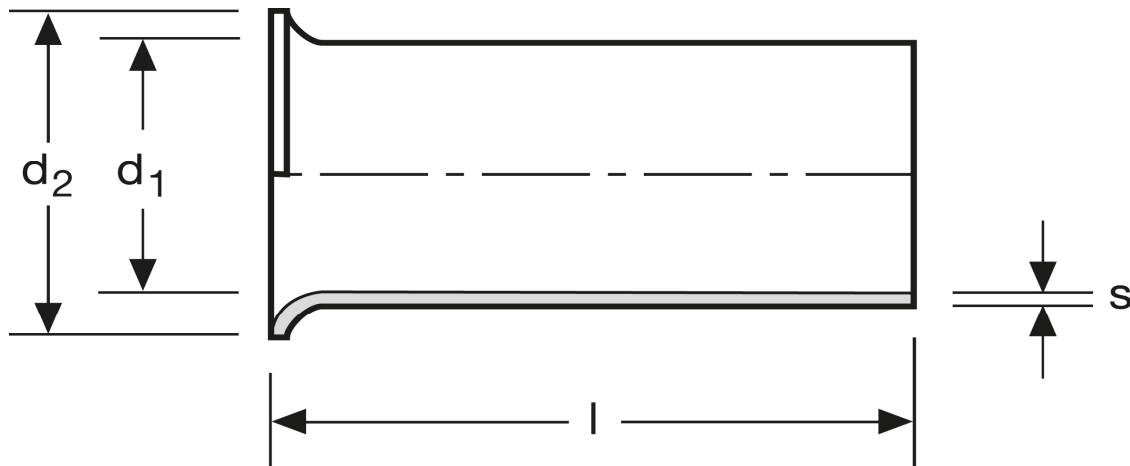


Aderendhülsen 1 mm² - 8 mm

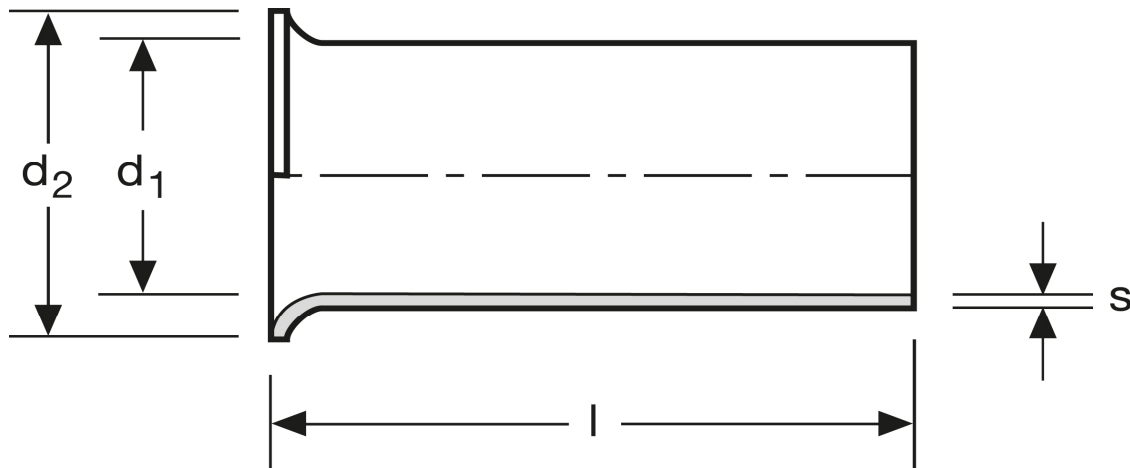


Art.Nr.	Werkstoff	Oberfläche		
A 107081	Cu-ETP	galv. Ag	0,063/1000	1.000
	l	d_1	d_2	s
in mm:	8	1,5	2,5	0,15

Stand: 20.03.2014

Cord end-sleeves

1 mm² - 8 mm

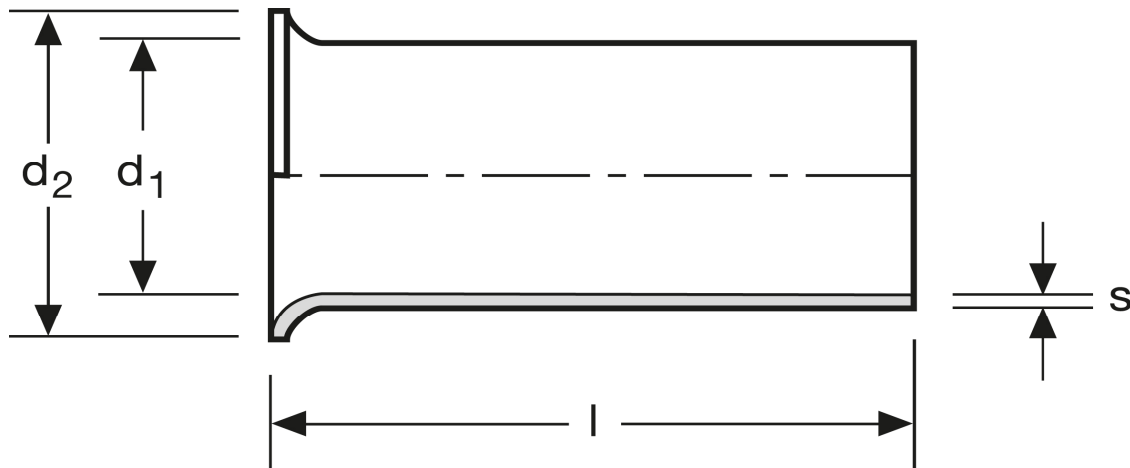


art.no.	material	surface		
A 107081	Cu-ETP	silv. plated	0,063/1000	1.000
	l	d₁	d₂	s
in mm:	8	1,5	2,5	0,15

Date: 01.07.2014

Cord end-sleeves

1 mm² - 8 mm



art.no.	material	surface		
A 107081	Cu-ETP	silv. plated	0,063/1000	1.000
	l	d ₁	d ₂	s
in mm:	8	1,5	2,5	0,15

Date: 01.07.2014