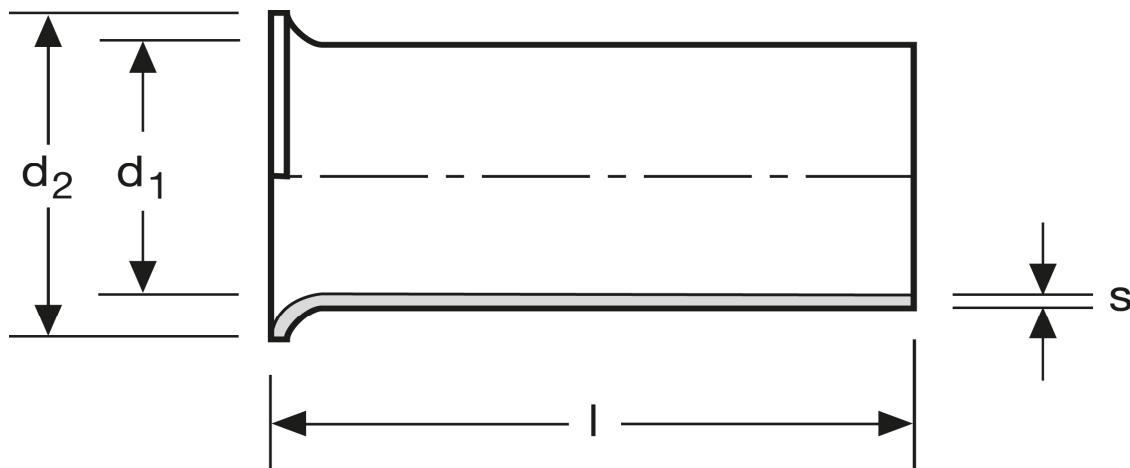


Aderendhülsen

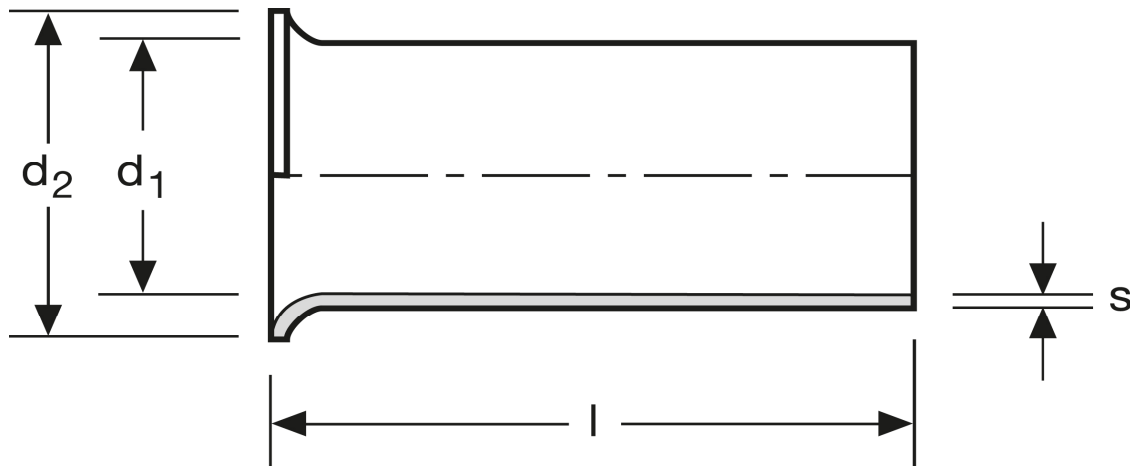
0,75 mm² - 12 mm



Art.Nr.	Werkstoff	Oberfläche		
A 106121	Cu-ETP	galv. Ag	0,084/1000	1.000
	l	d ₁	d ₂	s
in mm:	12	1,3	2,3	0,15

Stand: 20.03.2014

Cord end-sleeves 0,75 mm² - 12 mm



art.no.	material	surface		
A 106121	Cu-ETP	silv. plated	0,084/1000	1.000
	l	d_1	d_2	s
in mm:	12	1,3	2,3	0,15

Date: 01.07.2014