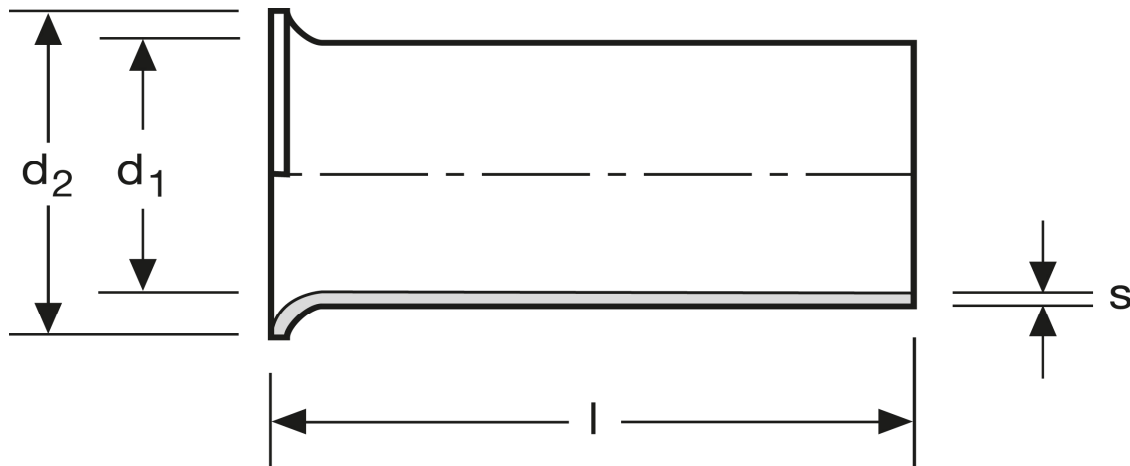


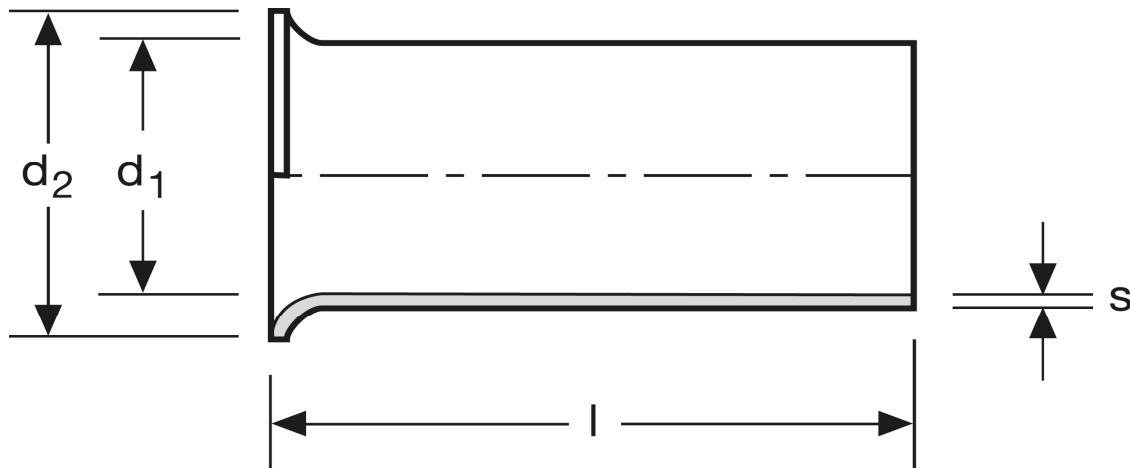
## Aderendhülsen 0,75 mm<sup>2</sup> - 8 mm



Art.Nr.	Werkstoff	Oberfläche		
A 106081	Cu-ETP	galv. Ag	0,052/1000	1.000
	l	d <sub>1</sub>	d <sub>2</sub>	s
in mm:	8	1,3	2,3	0,15

Stand: 01.07.2014

**Cord end-sleeves**  
 0,75 mm<sup>2</sup> - 8 mm



art.no.	material	surface		
A 106081	Cu-ETP	silv. plated	0,052/1000	1.000
	<b>l</b>	<b>d<sub>1</sub></b>	<b>d<sub>2</sub></b>	<b>s</b>
<b>in mm:</b>	<b>8</b>	<b>1,3</b>	<b>2,3</b>	<b>0,15</b>

Date: 01.07.2014