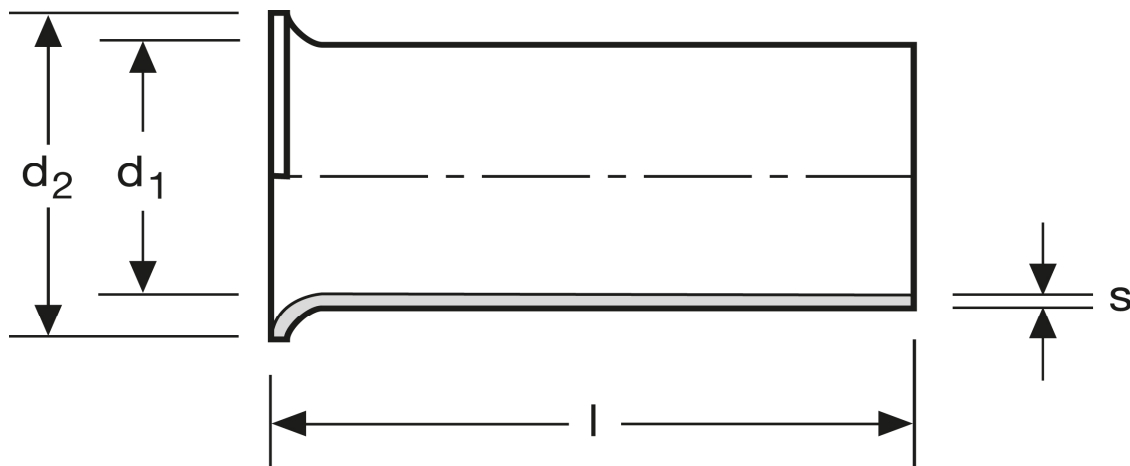


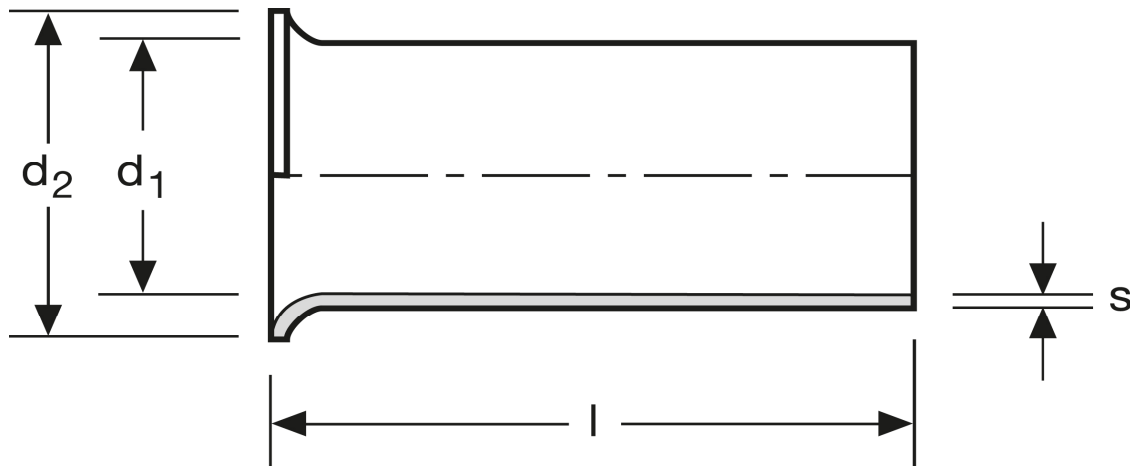
## Aderendhülsen 0,75 mm<sup>2</sup> - 6 mm



Art.Nr.	Werkstoff	Oberfläche		
A 106061	Cu-ETP	galv. Ag	0,040/1000	1.000
	l	d <sub>1</sub>	d <sub>2</sub>	s
in mm:	6	1,3	2,3	0,15

Stand: 26.06.2014

## Cord end-sleeves 0,75 mm<sup>2</sup> - 6 mm



art.no.	material	surface		
A 106061	Cu-ETP	silv. plated	0,040/1000	1.000
	<b>l</b>	<b>d<sub>1</sub></b>	<b>d<sub>2</sub></b>	<b>s</b>
<b>in mm:</b>	6	1,3	2,3	0,15

Date: 26.06.2014