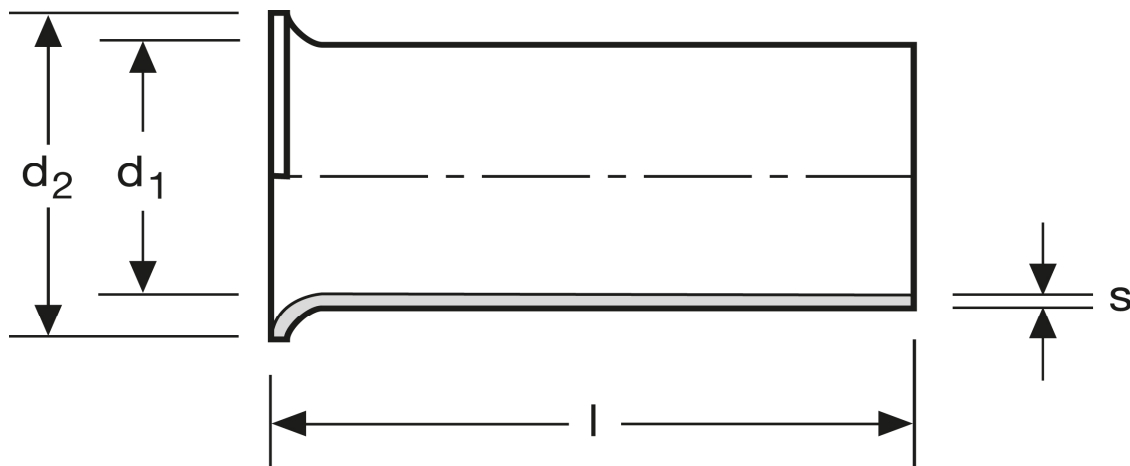


Aderendhülsen

0,34 mm² - 7 mm

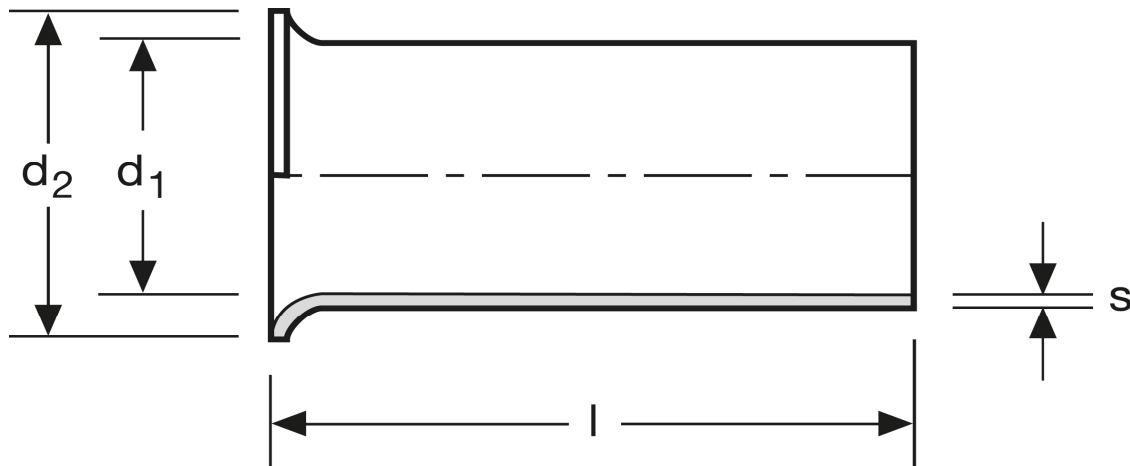


Art.Nr.	Werkstoff	Oberfläche		
A 104071	Cu-ETP	galv. Ag	0,037/1000	1.000
	l	d ₁	d ₂	s
in mm:	7	0,9	1,8	0,15

Stand: 26.06.2014

Cord end-sleeves

0,34 mm² - 7 mm



art.no.	material	surface		
A 104071	Cu-ETP	silv. plated	0,037/1000	1.000
	l	d₁	d₂	s
in mm:	7	0,9	1,8	0,15

Date: 26.06.2014