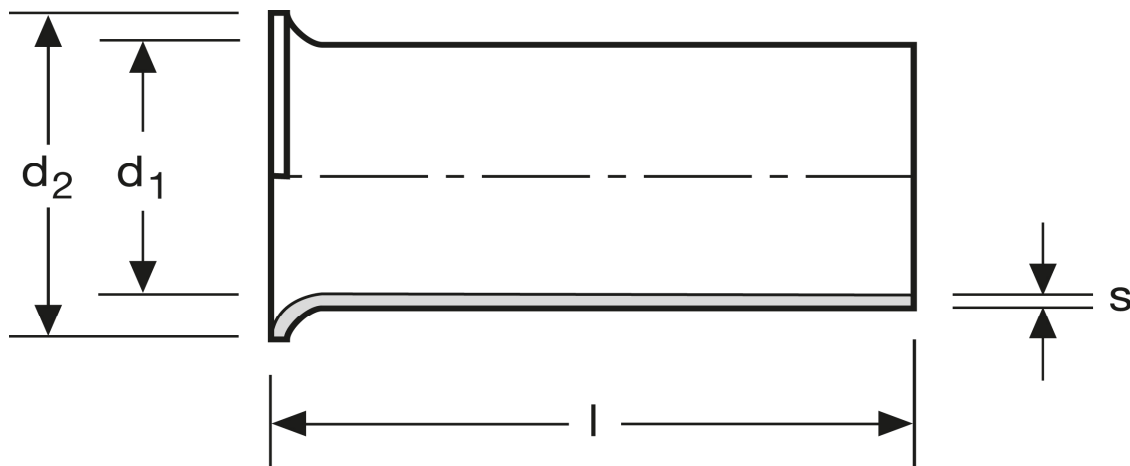


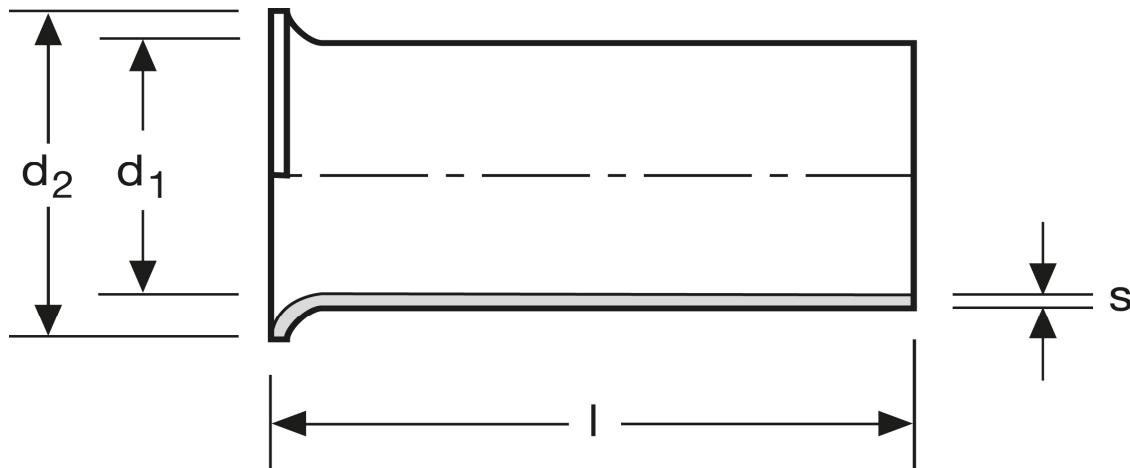
## Aderendhülsen 0,25 mm<sup>2</sup> - 5 mm



Art.Nr.	Werkstoff	Oberfläche		
A 103050	Cu-ETP	galv. Sn	0,023/1000	1.000
	l	d <sub>1</sub>	d <sub>2</sub>	s
in mm:	5	0,8	1,7	0,15

Stand: 26.06.2014

**Cord end-sleeves**  
 0,25 mm<sup>2</sup> - 5 mm



art.no.	material	surface		
A 103050	Cu-ETP	tin plated	0,023/1000	1.000
	<b>l</b>	<b>d<sub>1</sub></b>	<b>d<sub>2</sub></b>	<b>s</b>
<b>in mm:</b>	5	0,8	1,7	0,15

Date: 26.06.2014