

# factory certificate

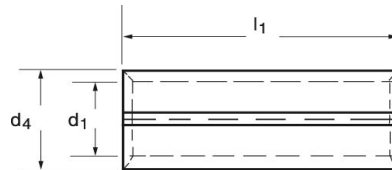


product: reduction sleeves  
for non-tension connectors  
surface: copper non-plated  
art-number: K 390101 – K 391103  
material: Cu-ETP tube acc. to EN 13600  
information: RoHS-conform (EU-Direktive 2002/95/EC)

Eisenacher  
quality management



Reduction sleeves



nominal size		art-number	dimensions			~kg 1000 St.	VE
from	to		d1	d4	l1		
25	10	K 390101	4,5	6,6	25,0	3,90	100
25	16	K 390102	5,5	6,6	25,0	2,10	100
35	10	K 390201	4,5	8,0	25,0	7,60	100
35	16	K 390202	5,5	8,0	25,0	5,90	100
35	25	K 390203	7,0	8,0	25,0	2,60	100
50	16	K 390301	5,5	9,5	33,0	14,00	100
50	25	K 390302	7,0	9,5	33,0	9,50	100
50	35	K 390303	8,5	9,5	33,0	4,20	100
70	25	K 390401	7,0	11,0	33,0	16,60	50
70	35	K 390402	8,5	11,0	33,0	11,30	50
70	50	K 390403	10,0	11,0	33,0	4,80	50
95	35	K 390501	8,5	13,0	45,0	34,00	50
95	50	K 390502	10,0	13,0	45,0	21,70	50
95	70	K 390503	11,5	13,0	45,0	11,60	50
120	50	K 390601	10,0	15,0	45,0	39,40	50
120	70	K 390602	11,5	15,0	45,0	29,20	50
120	95	K 390603	13,5	15,0	45,0	13,50	50
150	70	K 390701	11,5	16,5	53,0	52,00	25
150	95	K 390702	13,5	16,5	53,0	33,40	25
150	120	K 390703	15,5	16,5	53,0	11,90	25
185	95	K 390801	13,5	18,5	53,0	59,40	25
185	120	K 390802	15,5	18,5	53,0	37,80	25
185	150	K 390803	17,0	18,5	53,0	19,80	25
240	120	K 390901	15,5	21,0	55,0	77,20	25
240	150	K 390902	17,0	21,0	55,0	58,40	25
240	185	K 390903	19,0	21,0	55,0	30,80	25
300	150	K 391001	17,0	24,0	58,0	117,00	10
300	185	K 391002	19,0	24,0	58,0	87,00	10
300	240	K 391003	21,5	24,0	58,0	46,00	10
400	185	K 391101	19,0	27,0	80,0	201,00	10
400	240	K 391102	21,5	27,0	80,0	150,00	10
400	300	K 391103	24,5	27,0	80,0	72,00	10